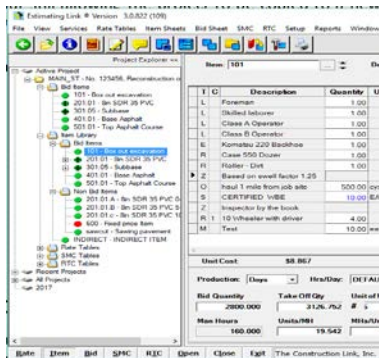


Added Features to EL Version 3

Through attentive customer support and innovative programming, The Construction Link has added new features and upgrades to Estimating Link:

- **Easy Excel Export** – Right click on either the Bid Sheet or Item Sheet to export the sheet to Excel.
- **Sort RTC by Code** – The default setting allows you to view the order you entered the data. Now you can view by Code, then by Name. Go to Setup > Options > SMC/RTC Options for the new setting.
- **Project Read Only** – Right after you have submitted your bid, you should make your project read-only thereby protecting it from further changes, but still allowing the project to be copied to a new name.
- **Project Explorer** – Major changes to our project explorer. We have added the Item Library which contains Bid Items and Non-Bid Items and allows the user to navigate through both. Also, a new View menu.



Learn about these features and more in-person at one of our upcoming training seminars.

Cloud Computing

A great deal of consideration should be given when electing to put the database in a Cloud environment. If you are considering moving away from a company server to a managed Cloud, please note that the Estimating Link program and database can be installed on a cloud based server. Please give our support staff a call at (800) 448-0714 and we can offer some suggestions and discuss requirements.

Upcoming Trainings

Once again, The Construction Link will be offering training at 3 different locations throughout the US. At these full-day seminars both novice and advanced users will learn how to optimize Estimating Link's performance and learn about all the new user friendly and time saving features. We'll also be demonstrating the use of Electronic Bidding. The training provides a great opportunity to meet and hear from other estimating professionals and provide feedback and user request that will shape the direction of future updates. Locations and dates below:

- **Albany, New York** – January 12, 2018
- **Orlando, Florida** – February 23, 2018
- **New Orleans** – March 23, 2017

[Click here for more information or to reserve your seat now.](#)

Updating Estimating Link

We urge you to update Estimating Link Version 3 when notified of an available update. In addition to the update, you may receive a message that your database needs to be updated as well. When prompted to back up the current data base, please select **YES**. Currently we are in the release of 3.0.822(109).

On-Site Training

We offer personalized onsite training at your office or online that is tailored to the needs of your team. Please email sales@tcli.com for more information.

Subscribing to a **Support and Maintenance Plan** will ensure that you always have the most current version and help is a phone call away. Call us today if you have questions concerning your plan.

